

CONTACTS

Pruce Newman Pipework Ltd
incorporating
 Ayton Fabrications
 Pruce Newman Projects

Head Office

Ayton Road, Wymondham,
 Norfolk NR18 0QJ.

Tel 01953 605123
 Fax 01953 601115
 Email mail@prucenewman.co.uk
 Web www.prucenewman.co.uk

Southern Area Office

Suite 5, Riverside House,
 Lower Southend Road, Wickford,
 Essex SS11 8BB.

Tel 01268 739470
 Fax 01268 764183

Tim Moore

Sales Projects Director
 Tel 01953 609671
 email tim.m@prucenewman.co.uk

Alan Pruce

Director, East Anglia Region
 Tel 01953 609621
 email alan.p@prucenewman.co.uk

Graham Newman

Director, Southern Region
 Tel 01268 739471
 email graham.n@prucenewman.co.uk

Barry Edwards

Managing Director
 Tel 01953 609666
 email barry.e@prucenewman.co.uk

Lisa Cootes

Admin
 Tel 01953 609662
 email lisa.c@prucenewman.co.uk

Barry Kay

Accounts
 Tel 01953 609663
 email barry.k@prucenewman.co.uk

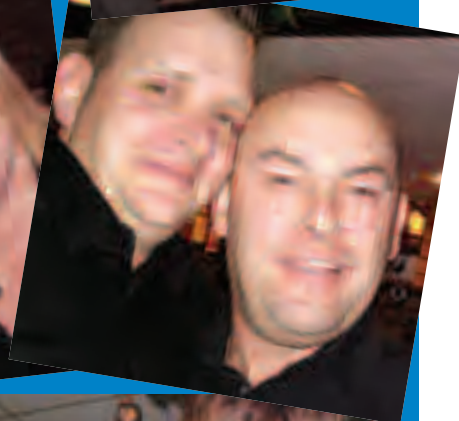
Debbie Waller

Newsletter Co-ordinator
 Tel 01953 609661
 email debbie.w@prucenewman.co.uk

Designed and produced by
Countrywide Publications
 Tel 01986 834216
 email barry.spouge@micropress.co.uk

Oh what a night!

What a party night...Pruce Newman staff enjoyed a party night when the company held its Annual Dinner Dance at the George Hotel, Swaffham in December. Our photographs tell the story of a great night out. New venue next year - watch this space.



British Sugar contract completed

Another British Sugar contract was successfully completed at the Bury St. Edmunds factory in August 07.

The Decal Project, with a final value of over £400k was finished on time, in budget and most importantly, without incident (apart from a wasp sting!).

Much of the stainless steel pipework, ranging from 50mm to 600mm diameter, was prefabricated in the Wymondham workshop, with minimal alterations needed on site.

The good working relationship, team spirit, and British Sugar's practical approach to safety contributed to a mutually beneficial outcome and proved that bonus is still there to be earned! (The SWEEQ element of the bonus, gained for passing Safety and Quality audits, adding a substantial amount)

