

ALL PLAYING A PART IN OUR BID FOR NEW BUSINESS

Tim Moore reports

A lot of work is going on behind the scenes in sales and estimating as we endeavour to prolong our recent busy period.

We have tendered a number of large projects in the water industry. Hopefully, we will be able to speak more of these in our next issue.

We have secured a contract with British Energy at Hinkley Point B Power Station in Somerset, which will run through 2008.

Our work with British Sugar at Wissington and Bury St Edmunds is in full flow, and we are about to

begin a major contract with Vopak in Thurrock.

We have a number of new clients with whom we are building a good reputation, including DSI (our joint venture partner for Southern Water) and Carless. We also have continued opportunities with Carillion (ex-Mowlem).

We all have a part to play in maintaining and developing the well-respected name of Pruce Newman, to help us win repeat business.

Everyone's best efforts are appreciated.

It's always safety first for Pruce Newman site staff

Members of the Pruce Newman site staff at the British Sugar, Wissington, site have won first prize in a safety quiz organised by the British Sugar contractors' safety committee.

Pruce Newman is one of about a dozen contractors on site that attend the monthly safety meetings.

The quiz was open to all contractors and the questions reflected site specific and more general health and safety issues.

Although the quiz was not intended to be taken too seriously, the result hopefully demonstrates that Pruce Newman employees take a responsible approach to all matters concerning the safety of themselves and others.

British Sugar very generously offered a free breakfast for two persons as the prize.

Well done to all of you who made a contribution.

PNP MESSAGE

**Barry Edwards
Managing Director**



At the completion of our 2006-07 financial year it is looking as if we will have surpassed the challenge set by our own business plan.

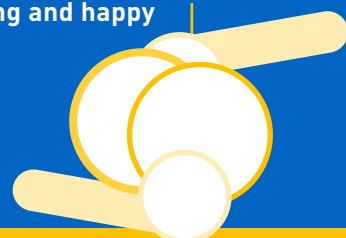
Thanks are extended to my fellow directors, office staff and site-based staff for their contributions to this success.

My appreciation also goes to our clients who have provided repeated opportunities for us to build on the very good relationships formed over three and a half decades.

I am also particularly pleased that many PN staff have been rewarded for their efforts. Bonus earnings appear to be increasing but, perhaps most importantly, our excellent company safety record has been maintained. Employees have worked in a safety conscious manner. Our strategy and practices are delivering the best results – less injury, improved health, less discomfort and less lost time!

For the sake of yourself, your family and the company, please keep up the high standards and performance levels.

My final thank you goes to Terry Edwards and Trevor Parnell who completed 67 years of service between them just recently. They are both wished a long and happy retirement.



STAFF NEWS

Summer Golf Pairs

The first round golf matches of our inaugural competition are almost complete. We have had some enjoyable golf played, despite some indifferent weather at times.

The standard produced has been generally very good and at times exceptional. Darren Clubb produced a round of 76 (only 5 over par and 8 below his handicap), but this was still only good enough to draw the match with Billy Walpole & Bob Buntin. Other good individual performances have been reported from Danny Hunter, Billy Walpole and Barry Edwards.

Arguably the most consistent team so far is the partnership of Dave Todd & Alan Pruce. The semi-finalists are already known. The draw is: Dave Todd & Alan Pruce v Will Emmett & Darren Clubb; Bob Buntin & Billy Walpole v Mark Blaxter & Danny Hunter.

Tim Moore

■ Following the enjoyable success of the pairs Golf Tournament, we are looking for another possible company social event.

A coarse fishing match has been discussed and some initial enquiries have been made with potential venues. Anyone interested please contact Tim Moore (01953 609671) or David Newitt.

ANNOUNCEMENTS

Births

Justin (based at Cantley) & Rachel Edwards, a baby girl (Sophie) 8lb 8oz

Marriages

Jamie Key (based at Wickford) married Helen in May 2007

Grandad

Dave Todd became a Grandad on 12 July 2007, when his son and daughter in law (Andrew & Claire) presented him with baby Cody Rhys, weighing in at 9lb. 14oz.

Christmas Dinner Dance

The date for the Christmas Dinner Dance at The George Hotel, Swaffham is Saturday 15 December. Further information will be sent out to all.

See our new safety policy: a must-read!

The Company "Health, Safety, Welfare and Environmental Policy" was updated in June 2007, copies of which can be found on all sites, contained within the Yellow Site Safety File. All personnel will be receiving a new Handbook, which includes the Safety Policy, all general Risk Assessment and relevant COSHH Assessments. Please take time to read and understand the information inside.

PPE - We have recently carried out a review of all accidents, incidents and PSA.

From this review, it is evident that the main areas we need to improve on are the wearing of Personal Protective Equipment and the correct selection for the task that you are working on.

To this end, we have embarked on a training programme, which will include, toolbox talks, the showing of DVDs, name-and-shame posters and all employees taking responsibility for the safety of themselves and other people working close by.

PPE is intended to protect you from the risks, which cannot be eliminated or guarded against by other more effective means.

Because of the type of work we do, all operatives will wear the following PPE as standard (unless it has been agreed before hand that they are not required on that site). They are:

- Safety Boots
- Safety Glasses
- Hard Hat
- Gloves (correct for the task you are working on)
- Overalls

In addition to this you may need further PPE, which is more specific to the task you are working on (see Risk Assessments for more details)

HORRORS



Some PPE seen on the internet.



Remember - If you see somebody grinding with just their glasses on, please do not take the easy option and do nothing. Stop that person and ask them to use the correct PPE, you could be saving their eyesight!

VIBRATION - You will notice over the coming months that all vibrating equipment will have stickers placed on them which will indicate to you, low, medium or high risk (Green, Amber and Red).

Please take notice of these as they are there for your safety.

What they mean

- Green** Can be used for a full working day
- Amber** Between two and 8 hours
- Red** Up to two hours

Measurements at the moment indicate that on average we are using vibrating equipment for 51 minutes of the working day, with the shortest daily usage of 5 minutes and the longest of 141 minutes.

These figures suggest there is no need for concern.

But - please - when using Amber and Red items of equipment (reciprocating saws, impact wrenches, hilti drills and large grinders) keep an eye on the times.