

News & Health & Safety Letter

Customer Surveys – Good News

For some years now we have conducted formal but random enquiries with our clients to have a quality check on our performance relating to the value, competitiveness, safety, quality, service, complaints, standards, supervision & management etc. For the 6 month period ending November 2006 we achieved the highest result so far.

It was in August 2003 that we began this discipline. Marilyn Medcraft has now conducted nine telephone surveys with client contacts from all fields of our activities. The responses we look for are based on facts, experience and perceptions. It is just one of the tools we use to help with the assessment of business direction and strategy. Our lowest score has been 79.4%. The latest result returned at 91.7%! This now sets a high precedent and will be hard to live up to.

Many thanks go out to all staff for making this possible. A remarkable achievement!

Barry Edwards
Managing Director

60 Second interview with Jamie Key – Site Supervisor



What have you found most surprising in your Move from being on the tools to being a site supervisor?

Not being able to switch off at the end of the evening.

What is your most annoying habit?

Supporting West Ham - people say

What is the best piece of advise you have been given?

Take my time and think things through before acting.

What did you want to be when you grow up?

Footballer

What is your favorite place and why?

Abroad – because of the weather.

What is the last CD you bought?

Scissor Sisters

What four people dead or alive would you like to invite to your dinner party and why?

1. Nan & Grandad so they can see were I am now. 2. Peter Kay for entertainment value. 3. Kiefer Sutherland – I can ask him if he does his own stunts in 24. 4. Henry Paul – What really happened to Princess Diane?

Happy New Year to you all

February
Issue 2007

Service Years 2007

Congratulations for making 5 years Service.

Barry Prior
James Wilson



Congratulations for making 10 years Service

Phil Hoy
Alan Page



Jason Cootes
Clive Fulcher

Congratulations for 15 years Service



Marilyn Medcraft

Congratulations for 20 years Service

Colin Lee



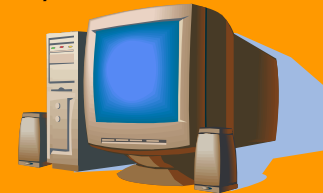
Congratulations for the BIG one 25 years Service.

Geoff Kirk & John Tanner



Welcome Back Rob Petre

Pruce Newman would like to welcome back Rob to the fold after a 6 year period with Mitsui Babcock and he's returning as an Office Waller when he left as a Site Operator.



**REMEMBER
PRUCE NEWMAN NOW HAS A NO
SMOKING POLICY!!!!**

1ST July is the official date when this comes into date by law. There is no exception to this rule. This also includes ALL Company vehicles.

Pruce Newman Pairs Golf Challenge

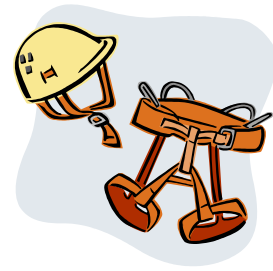
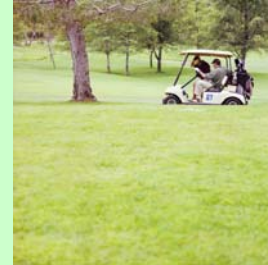
We intend to organise an event this year for all budding or keen golfers in the company.

This will take the format of a pair's better ball knock out, to take place on evenings and weekends (dates to be arranged by players) during spring and summer at Barnham Broom Golf Club. All the green fees will be paid by the Company.

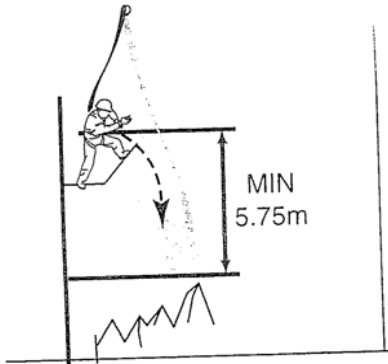
Once entrants have confirmed, handicaps will be agreed and then partners will be drawn by lots. The first round will then be drawn to decide which pairing plays against which. A match will then take place at a suitable time with the winners progressing to the next round.

(Full Competition rules will be issued to all entrants)

Initial enquiries have shown a great deal of interest. Anyone wishing to take part please give your name, Handicap and contact telephone number to me, Phil Hoy or Darren Clubb by 16th March 2007.
Good Luck Tim Moore (01953 609671)



Safety Harnesses



REMEMBERING A FEW POINTERS BEFORE USING A HARNESS

Visually inspect the condition of the webbing, stitch patterns and fittings.

- If there is any abrasion, cuts, holes or burns to the webbing the item should be rejected.
- If there is any corrosion, cracks, distortion or burns on the fittings the item should be rejected.
- If there is any broken, worn, pulled, or unraveling stitches the item should be rejected.

During Use.

- Anchor points should always be above the operator where possible & slack kept to a minimum.
- Clearance below the operator should be a minimum of 5.75 meters for a 2 meter absorbing lanyard; this is the potential extension plus body length. [See above diagram.](#)
- Protect all equipment from sharp objects; work positioning lanyards should be passed around anchorages, which do not have sharp edges.
- **Please refer to the full tool box talk 61 on Full Body Harnesses**

New Contracts on the Horizon

£150K ACW Strainer Project at Dungeness B Power Station is underway.

£70K Gas Drier vessels replacement job at UOP Enfield is set to start March - April 2007.

£95K Pipebridge at Bayer Cropscience Norwich started middle of December 2006.

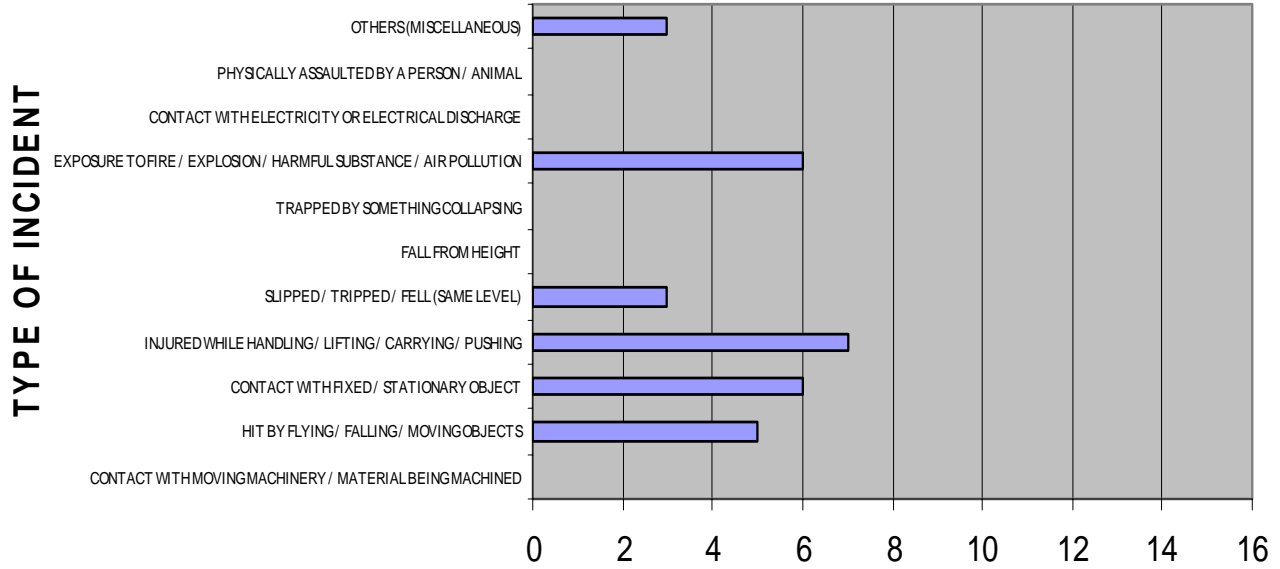
Holiday's



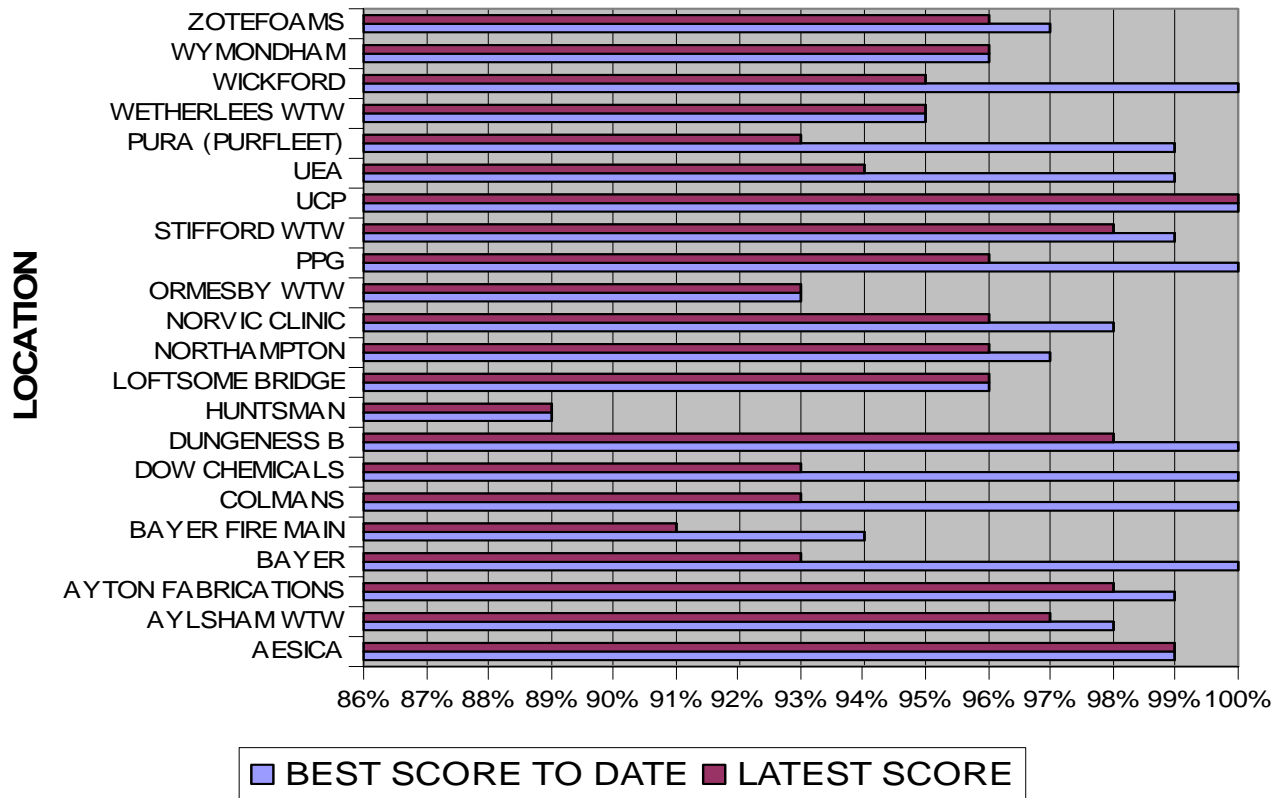
This year's holiday entitlement has now started and it is advised that you start to book your 2007 holiday now. A maximum of six site based staff will be permitted to take holiday during the same week.

Incident Occurrence's and Safety Chart

INCIDENT OCCURRENCES FROM END OF DECEMBER 2005 TO END OF DECEMBER 2006

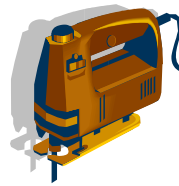


SAFETY AUDIT SCORES 2006-2007



**Thank you to those people
who have participated in
this newsletter**

Steve Cleveland Safety Audit & Incident Occurrences
Dave Todd - Holidays
 Safety Harnesses
 Hand Arm Vibration
Tim Moorse - Pairs Golf Challenge
Graham Newman Welcome Back Rob
 New Contracts On the Horizon.
Barry Edwards- Customer Surveys, Good News.



Hand Arm Vibration - Update

All tools which are used by our employees which present a risk, because they produce a degree of vibration have been identified.
They are:

Drills: Drilling holes in metal and concrete, polishing and de-burring.
Magnetic Drill Drilling holes (by milling)
Grinding: Cutting, Grinding, Brushing steel.
Die grinder: Internal grinding of steel.
Chop saw: Cutting steel pipe.
Impact wrench: doing up and undoing Nuts and Bolts.
Threading Machine Threading Pipe (Hand held & mounted on a stand).
Jigsaw: Cutting sheet steel.
G F Cutter: Cutting steel pipes.
Reciprocating saw: Cutting steel pipes.

Having identified these items, all the relevant Risk Assessment was modified to include the Hazard of Vibration and the preventive and protective measures to eliminate or control the hazard.

We then found a company (Builders Equipment) who could carry out some 3 point axis test on all our equipment. Unfortunately this company stopped providing this service. We are in the process of sourcing an alternative.

In the meantime we have investigated data from a number of sources including:

Tool Manufactures: Bosch, Hilti, Makita, Milwaukee
 Hire Companies: Gap, Hewden, Brandon, Speedy, Hss
 and the web site: www.operc.com Which is a Hand-Arm Vibration Test Centre. This Centre is looking at running a test on all vibrating equipment, so more useful and relevant information will be available in the future.

Having looked at this information we put the hire companies' data with our data to find an average m/s² reading for all identified equipment. Using the HSE Hand-arm vibration exposure calculator and the Green/Pink/Red colours for low, medium and high risk activity. You will notice from the chart adjacent that none of the units come in to the high category. Most of the Units are in the low category. Which means they can be used for up to 8 hours in any working day, the worst readings as you would expect is for hammer drills when drilling into concrete, this still allows for 2 hours use throughout the day.

Going on from these findings we are now measuring trigger times. Early findings show Daily usage is lower than expected the highest being 141 minutes and the lowest being 9. The average daily use is 60 minutes. More measurements are being taken as we speak, so these figures will change.

PRUCE NEWMAN PIPEWORK LIMITED				
Combined hire and tested units analysis				
Description	Hire	PNP Test	Aver	Max Hours Used
Rex Threading Machine	-	1.25	1.25	> 24hrs
Prepping Tool		1.82	1.82	>24hrs
Magnetic Drill	3	0.9	1.95	>24hrs
Die Grinder	2.5	2.44	2.47	>24hrs
Nibblers	2.5		2.50	>24hrs
Cut Of Saw	2.5	2.84	2.67	>24hrs
Pipe Threader Hand Held	2.5	3.04	2.77	>24hrs
2 Speed Drill (metal)	2.5	3.76	3.13	20hrs 25mins
4 ½ Grinder	3.5	3.71	3.61	15hrs 21mins
Cordless Drill	2.5	4.87	3.69	14hrs 41mins
Jigsaw	4.4	4.25	4.33	10hrs 40mins
7/9 Grinder	5.9	3.39	4.65	9hrs 15mins
GF Cutter	-	5.81	5.81	5hrs 52mins
Impact Wrench	6.6	6.4	6.50	4hrs 44mins
Reciprocating Saw	7.3	11.28	9.29	2hrs 19 mins
Hammer Drill	-	8.62	9.41	2hrs 16mins

